

Orsett Terrace, W2 6JU

Asking Price £275,000

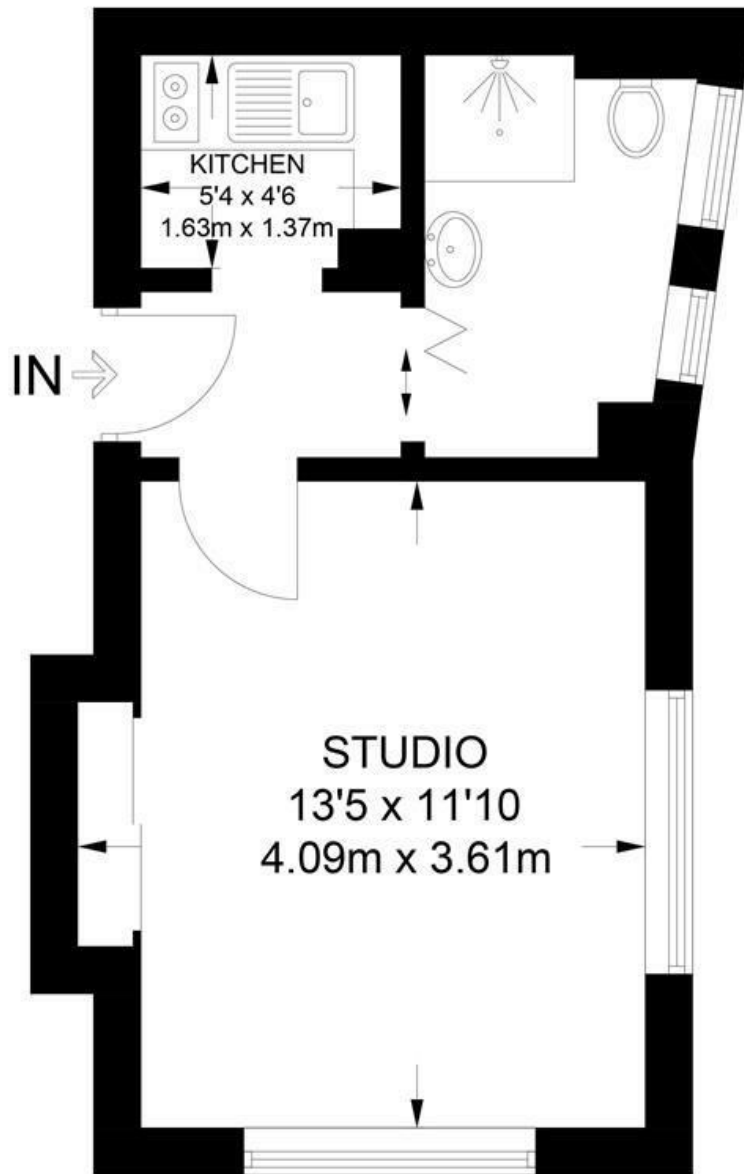


An unmodernised 246 sq ft studio apartment situated on the 6th floor of a Grade II Listed, stucco-fronted 1930's building within walking distance to Kensington Gardens and Hyde Park.

The apartment features a separate kitchen and large windows in the living space flood the interior with natural light while offering breathtaking views across London.

The building benefits from a live-in caretaker and has good transport links with Paddington Station a short walk away.

The station provides access to the Elizabeth Line (offering direct service to Heathrow Airport) as well as the Bakerloo, Circle, and District underground lines.



SIXTH FLOOR

APPROXIMATE GROSS INTERNAL AREA
246 SQ FT / 22.9 SQ M

This plan has been drawn for illustrative and identification purposes only.

Energy Efficiency Rating		Current	Potential
Very energy efficient - lower running costs			
(92 plus) A			
(81-91) B			
(69-80) C			
(55-68) D			
(39-54) E			
(21-38) F			
(1-20) G			
Not energy efficient - higher running costs			
		75	77
England & Wales		EU Directive 2002/91/EC	

Environmental Impact (CO ₂) Rating		Current	Potential
Very environmentally friendly - lower CO ₂ emissions			
(92 plus) A			
(81-91) B			
(69-80) C			
(55-68) D			
(39-54) E			
(21-38) F			
(1-20) G			
Not environmentally friendly - higher CO ₂ emissions			
England & Wales		EU Directive 2002/91/EC	